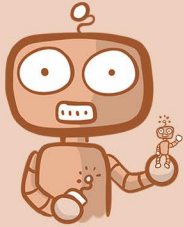
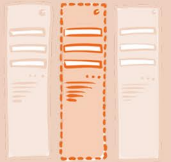


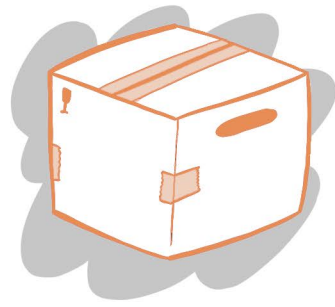
V LAYER SUPPORT



VLayer support is a unique service to PCS. Using our specialist experience in virtual systems we have designed and developed a set of tools that are specifically geared to actively monitor your virtual environment. Using an active 24/7/365 monitoring service which detects problems and potential issues hidden deep in the virtual stack. PCS will analyse and make improvements in configuration and capacity management. Our virtual solutions team proactively monitor your environment while providing enterprise level support and expertise, to ensure maximum uptime of your virtual environment.



- Support for Virtualised Systems
- 3rd Line Level Telephone and Remote Helpdesk Support
- VMware & Microsoft HyperV Analysts/Engineers
- Proactive and predictive monitoring of virtual and physical layers
- Scheduled checking and maintenance by PCS virtualisation expert (optional)

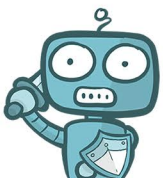


- Liaise with PCS consultants continuously develop & improve IT environment
- PCS's vendor partnership status ensures best support & pricing
- Experienced & Established Support Facility
- Monitors for Growth, Performance & Capacity
- Hardware Warranty Management & Configuration

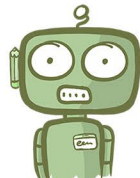
VLayer Support is part of the Assist product family.

Explore the other solutions we offer to manage your IT infrastructure, across our 5 product families.

Contact us today for more information.



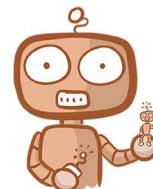
PROTECT



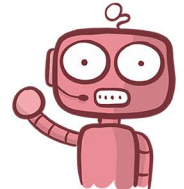
CONSULT



CLOUD



ASSIST



SUPPORT