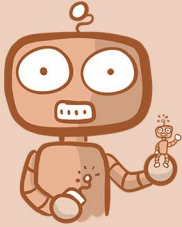




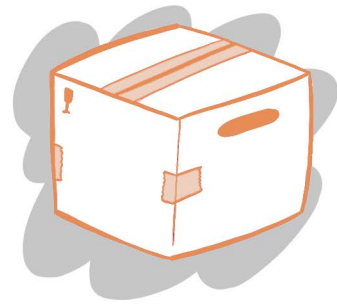
MOBILE CONTROL



End users have a growing expectation of how they consume IT in the workplace, and with the average user now owning 3 devices they want to be able to continue that experience in and out of the office. This growing device sprawl can be a huge task for IT to manage and ensuring the users are safe, the company's data is secure and the business remains data compliant can become a real burden to the company. Mobile Control is a powerful and scalable, easy to manage & configure, mobile device management tool. Never compromising on privacy or productivity but always empowering users to be at their most efficient.



- Configure detailed security settings
- Monitor data usage
- Location tracking
- Visibility of device ownership and handset details
- Remotely lock, set passcode or wipe devices

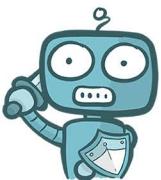


- Protect against device loss or theft
- Secure company data
- Cost control through asset expense management
- Doesn't compromise of productivity or privacy
- Simply managed through one easy portal

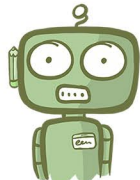
Mobile Control is part of the Assist product family.

Explore the other solutions we offer to manage your IT infrastructure, across our 5 product families.

Contact us today for more information.



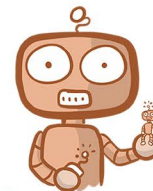
PROTECT



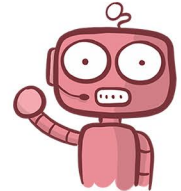
CONSULT



CLOUD



ASSIST



SUPPORT